



FD 100-135-180 G PLUS

HIGH PERFORMANCE, EFFICIENT TECHNOLOGY, ADVANCE DRYING



CHARACTERISTICS

- ✓ User friendly and totally programmable microprocessor with a 7" Touch II screen.
- ✓ USB Connection to upload programming or download traceability, data analysis. You can program time of the day promotions and discounts automatically.
- ✓ Videos shown on display: ads, instructions (useful for coin laundry).
- ✓ Anti-wrinkle system.
- ✓ End of cycle tone.
- ✓ Emergency stop button and security micro magnet to stop operation.
- ✓ Drum motion by direct drivegear-box transmission.
- ✓ Automatic reverse rotation of the drum.
- ✓ Frequency inverter for smoother operation.
- ✓ OPL Vended Fagor dryers can be easily converted from OPL to Self-Service and viceversa.
- ✓ Stainless steel drum
- ✓ Easy-to-clean, outer casing in gray skin-plate with stainless steel look.
- ✓ Ergonomic big loading door with a 180° opening and the option of double glazing.
- ✓ Stainless steel drum.
- ✓ Axial-radial airflow, resulting in greater drying efficiency.
- ✓ Drum with special smooth perforations for the gentle treatment of fabrics.
- ✓ Stainless steel lint filter at the bottom for more ergonomic, larger, and improved airflow.

OPTIONS:

- ✓ iDry System (Intelligent moisture sensor).
- ✓ FK System (Integrated fire prevention system).
- ✓ Double door-glass.
- ✓ Stainless steel side panels.
- ✓ Stainless steel front panel.



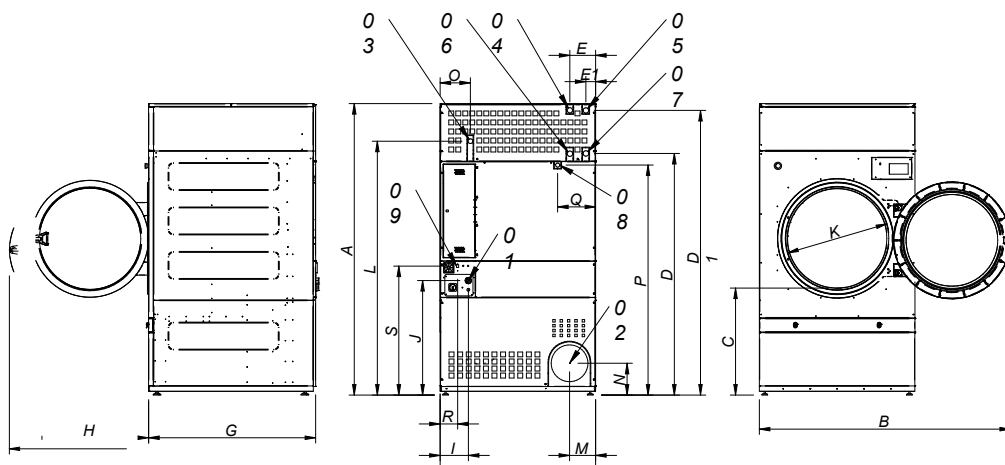
SUMMIT
SummitLaundry.com

Call 855-Summit9
Sales@SummitLaundry.com
120 Spagnoli Rd, #1B
Melville, NY 11747



TECHNICAL DATA

CAPACITY		UNIT.	FD - 100 G	FD - 135 G	FD - 135 G			
Capacity 1/18	Capacity 1/20	lb	1.96/1.76	2.62/2.63	3.27/2.9			
Hourly Output (gas)		b/h	199/96	285/144	301/94			
Evaporation Capacity (gas)		l/h	45/48	64/72	68.2/93.8			
DRUM								
Drum		in	48.22	48.22	48.20			
Door		in	31.57	31.57	31.57			
Door Center Height		in	50.19	50.19	50.19			
Load Hole bottom height		in	34.40	34.40	34.40			
Drum length		in	29.9	40.15	49.29			
Drum Volume		l	896	1202	1500			
POWER								
Drum motor power		Hp	1.05	1.4	2.01			
Fan motor power		HP	2.95	2.95	2.95			
Electric heating Power		kW	54	72	72			
Total electric power (elec model)		kW	57	75.35	75.75			
Gas Heating Power		kW	60	90	120			
Instant Propane Gas Consumption (G31)		Btu/h	5.14	7.71	10.28			
Instant natural gas consumption (G20)		m3/h	6.35	9.53	12.71			
Total electric power (gas model)		kW	3	3.35	3.75			
Steam Heating Power		kW	91.3	128	128			
Total electric power (steam model)		kW	3	3.35	3.75			
CONNECTIONS								
Tension 230V - I + N + G		Nº x mm2 / A						
Tension 230V- III + G		Nº x mm2 / A	4 x 2.5 / 20A	4 x 2.5 / 32A	4 x 2.5 / 32A			
Tension 440 V- III + N + G		Nº x mm2 / A	5 x 35 / 100A	5 x 1.5 / 20A	5 x 50 / 125A	5 x 1.5 / 32A	5 x 50 / 125A	5 x 1.5 / 32A
Gas Inlet		BSP	3/4"	3/4"	3/4"			
DIMENSIONS / PACKAGING DIMENSION								
Net width / Gross width		in	50/52.4	50/52.4	50/52.4			
Net Depth / Gross Depth		in	43.6/46.7	53.8/57.3	93.8/84.7			
Net Height / Gross Height		in	93.8/84.7	93.8/84.7	93.8/84.7			
Net Weight / Gross Weight		Lb	871/984.2	1166.4/1267.9	1448.7/157.66			
OTHER								
Max airflow		CFM	2648.6	2648.6	2648.6			
Fume exhaust		in	11.81	11.81	11.81			
Sound Level		dB	67	67	67			



- 01 ELECTRIC CONNECTION
- 02 FUMES OUTLET Ø300
- 03 GAS CONNECTION 3/4"
- 04 STEAM CONNECTION 1" 100Lb)
- 05 STEAM CONNECTION (135/180 Lb) 06
- CONDENSATION OUTLET 1" 100Lb)
- 07 CONDENSATION OUTLET 1(135/180 Lb) 08 FIRE
- EXTINGUISHER WATER VALVE 3/4" 09 ETHERNET
- CONNECTION

	A	B	C	D	D1	E	E1	F	G	H	I	J	K	L	M	N	O	P	Q	R	S
FD-100G TP2	2380	2045	874	1981	2311	211	80	1270	1106	956	248	935	802	2088	214	240	244	1841	308	160	1053
FD-135G TP2	2380	2045	874	1981	2311	211	80	1270	1366	956	248	935	802	2088	214	240	244	1841	308	160	1053
FD-135G TP2	2380	2045	874	1981	2311	211	80	1270	1598	956	248	935	802	2088	214	240	244	1841	308	160	1053